

Small Character Ink Jet Printing

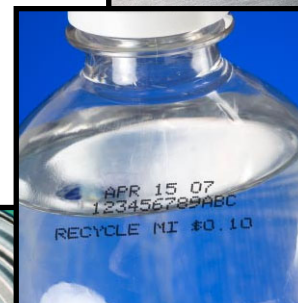
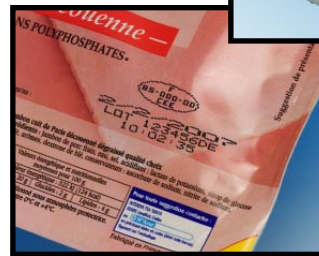
- **Fastest multi-line printer — 2 lines of code at 916 feet per minute**
- **Superior print quality — tall and bold codes even at high speeds**
- **Excel reliability refined over 20 years — superior uptime in high throughput environments**
- **Excel fluids — over 135 proven formulations for any application**

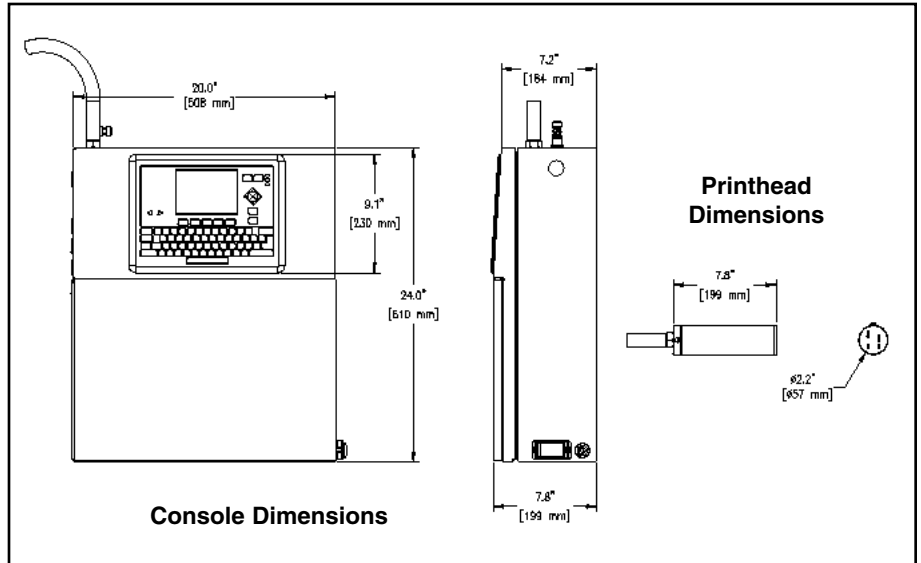
The Videojet Excel® DN is ideal for customers who want to print multi-line messages at high speeds or need to print complex codes combining text, logos and even bar codes. Built with the robustness of the time-tested Excel Series printers, the Excel DN allows you to reliably print 2 lines of code at speeds up to 916 feet per minute (279 m/min.) and print up to a total of 8 lines of information.

The Excel DN also features a bright backlit display making reading easy, even from a distance. The Excel DN's on-board logo capability allows you to create your own logos for regulatory requirements, product decoration, and branding.

Plus, its CompactFlash® memory cards make set-up, back up, cloning and upgrading to multiple units quick and easy.

The Excel DN will meet today's coding requirements, and with its superior multi-line and speed capability, will fulfill your needs in the future.





Specifications

Line Speed Capability

(10 characters per inch, per line)
Can print 1 to 8 lines of print at speeds up to 916 ft./min. (279.1 m/min.)

For precise speeds/matrices that relate to your specific application, please contact your Videojet Sales Representative.

Print Rate

Up to 1,833 characters per second, depending on font selections.

Font Matrix Configuration

Single-line: 5x5 Accudrop™, 5x7, 6x7, 7x9, 10x16, 16x24

Twin-line: 5x5 Accudrop™, 5x7

Tri-line: 5x7

Quad-line: 5x5

Bar Codes

Interleaved Two of Five (ITF 2 of 5); UPC A; EAN 8 & 13; Code 128; EAN 128; Code 39; 2D Data Matrix

Nominal Character Height

Selectable from 1/16th inch (1.6 mm) to more than 1/3 inch (8.4 mm), depending on matrix selected

Keyboard

Membrane style with tactile feedback including 70 numeric, alphabetic, and special function keys. PC style layout, to approximate international PC convention. Keyboard is wash-down and solvent resistant.

Display

320 x 240 backlit monochrome display, 5.7" (144 mm), measured diagonally
Display is wash-down and solvent resistant

Custom Logo/Graphics

Can be created by individual user

Languages

English, Arabic, Chinese, Danish, Dutch, Finnish, French, German, Italian, Japanese, Korean, Polish, Portuguese, Spanish, Swedish, Thai, Turkish

Data Interface

Connector™ via RS232, RS485 and Ethernet with optional hardware
Optional Remote Data serial port

Message Storage

Can store up to 250 messages using CompactFlash® memory cards

Console Dimensions

Stainless steel, rated IP65 and IP54 options available
24" (610 mm) high
20" (508 mm) wide
7.8" (199 mm) deep

Printhead

Stainless Steel
Diameter: 2.2" (57 mm)
Length: 7.8" (199 mm)

Printhead Cable

Flexible PVC tubing, reinforced by rigid PVC spiral
Dimensions: Length 19.7 ft (6 m); Diameter 1.05 in (26.7 mm)
Bend radius: 7.0" (178 mm)

Fluids/Consumption

Wide range of formulations and colors. Up to 67.5 million characters per quart of ink, depending on ink, stroke, setting and adjustments.

Temperature/Humidity Range

40° F to 110° F (4.4° C to 43.3° C),
10% to 90% RH without condensation

Air Requirements

65 to 85 psi minimum (4.5 to 5.9 bars), depending on ink. 0.8 SCFM max for IP65 and 1.0 SCFM max for IP54; dry, oil-free, filtered air.

Electrical Requirements

Nominal supply power 100 to 240 VAC at 50/60 Hz., 75 watts max.

Approximate Weight

Unpacked and dry: 70.0 lbs. (31.5 kg)
Packed and dry: 92.6 lbs. (42.0 kg)

Videojet TotalSource® Service

The **TotalSource** program is the finest and most complete technical support system in the business. These services include everything from expert applications assistance, operator training and a full spectrum of maintenance services. The **TotalSource** program ensures total customer satisfaction. **Support when you need it.**



CERTIFIED
ISO 9001
DOCUMENTED QUALITY



© 2006 Videojet Technologies Inc. – All rights reserved. Videojet Technologies Inc.'s policy is one of continued product improvement. We reserve the right to alter design and/or specifications without notice. Videojet, Videojet Excel and TotalSource are registered trademarks and Connector and Accudrop are trademarks of Videojet Technologies Inc. CompactFlash is a registered trademark of the CompactFlash Association.



800-843-3610 • www.videojet.com • info@videojet.com

Videojet Technologies Inc. • 1500 Mittel Boulevard
Wood Dale IL • 60191-1073 • USA
Phone: 630-860-7300 • Fax: 630-616-3623

Part No. SL000429
Excel DN-0906
Printed in U.S.A.